

The PEP

This Leaflet Will:

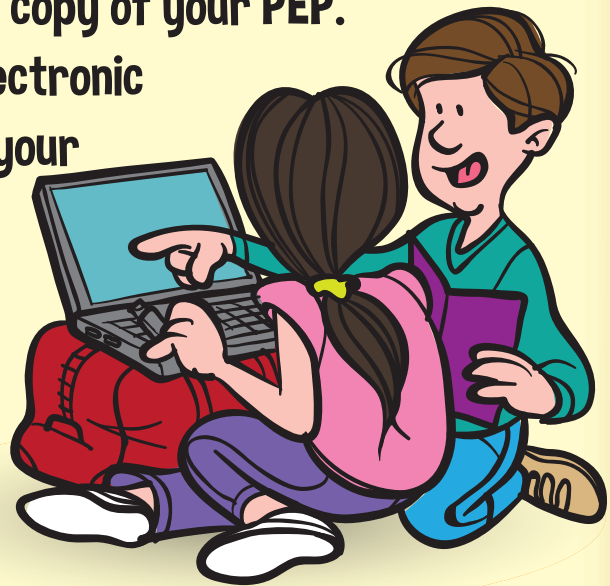
- Explain what a Personal Education Plan (PEP) is
- Explain why you have one
- Explain how it can help you



WHAT IS A PEP & WHY DO YOU HAVE ONE



- It is part of your care plan.
- Everyone in care has one.
- It will make sure you get the best from being in education/training/school.
- It is a plan that you and other people make together.
- You should always get a copy of your PEP.
- You can get a copy in electronic format for example on your memory stick, or a paper copy



THE PEP MEETING



- **This meeting will happen once a term.**
- **Someone will talk to YOU about this meeting.**
- **You will be asked when you would like to have the meeting.**
- **You will be asked where you would like the meeting to take place.**
- **This meeting is about YOU so it would be best if you could go to the meeting.**
- **Other important people in your life can go to the meeting.**
- **YOU can invite people, including an Advocate (someone who will speak for you), if you have one.**
- **Adults in the meeting MUST use language that you understand.**
- **After the meeting you will get a copy of the plan. This will tell you who is going to do what and by when.**

COMMENTS, COMPLIMENTS & COMPLAINTS



- You have the right to say what you think & we have to listen!
- If you are not happy with your PEP meeting or your plan you can say so.
- If you would like to talk to someone about this you can call, text or email -

**Lorraine Evans, PEP Co-ordinator
Tarvin Meadow Professional Centre,
Tarvin, Cheshire
Tel - 01606 274352
Mob - 07500 834910
Email - Lorraine.evans@cheshirewestandchester.gov.uk**

