

Cheshire West & Chester Council

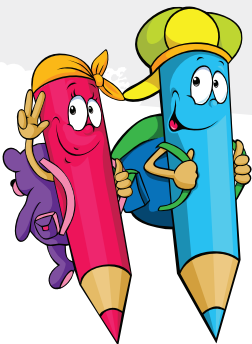
Monthly Drop-In available for Carer leavers past & presents

Drop in's 1st week of every month
10am-3pm

Tuesday: Wyvern House, Winsford.

Wednesday: P3 Office, Chester

Thursday: Library Workzone, Ellesmere Port



Support
in Life

Support to
access
service

**Pop in, socialise, network with services and see a PA
- Services available:**

Housing Advice, Council Tax Advice, Budget Planning, Access to internet to set up Housing Association Applications, bid on properties, Health advice, Advocacy service, Job centre benefit support, CV updated, Apprenticeship searches and registration, college applications, source courses available, University updates and financial advice, Youth service, Careers advice.

Foodbank vouchers provided, References for housing/college/jobs.

Help given to apply for Bank Accounts, Passports, Citizen Cards, Driving licences.

...and coffee, snacks, games and a good listening ear provided!

Let's keep in touch!



Cheshire West
and Chester