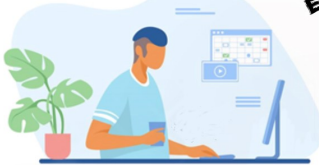
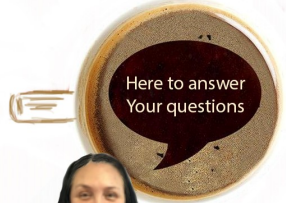




EVERY OTHER THURSDAY 3.30 – 5.50PM



DROP IN'S ARE FOR ADVICE, SUPPORT AND SIGNPOSTING TO THE CORRECT SERVICE OR JUST FOR A CHAT.



DATES ARE AS FOLLOWS,

4th and 18th FEB

4th and 18th MARCH

1st 15th and 29th APRIL.

13th and 27th May.



HELEN: 07748761135



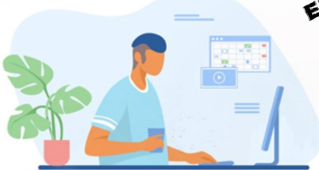
LOUISE: 07584611897



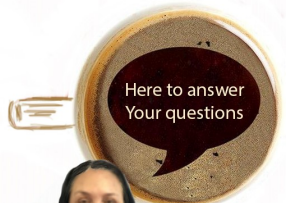
HOPEFULLY THE WORLD WILL BE BACK TO SOME SEMBLANCE OF NORMALITY BY THE SUMMER AND WE CAN RESUME OUR USUAL DROP IN'S WHERE WE HAVE OTHER PROFESSIONALS WITH US, PROVIDING THEIR ADVICE AND SUPPORT AND ACCESS TO A MEAL AND FOOD BANK IN THE SAME LOCATION.



EVERY OTHER THURSDAY 3.30 – 5.50PM



DROP IN'S ARE FOR ADVICE, SUPPORT AND SIGNPOSTING TO THE CORRECT SERVICE OR JUST FOR A CHAT.



DATES ARE AS FOLLOWS,

4th and 18th FEB

4th and 18th MARCH

1st 15th and 29th APRIL.

13th and 27th May.



HELEN: 07748761135



LOUISE: 07584611897



HOPEFULLY THE WORLD WILL BE BACK TO SOME SEMBLANCE OF NORMALITY BY THE SUMMER AND WE CAN RESUME OUR USUAL DROP IN'S WHERE WE HAVE OTHER PROFESSIONALS WITH US, PROVIDING THEIR ADVICE AND SUPPORT AND ACCESS TO A MEAL AND FOOD BANK IN THE SAME LOCATION.